



W
W O R M A L D

CREATING INNOVATIVE LIVING AND WORK ENVIRONMENTS SINCE

1964

SKETCH N

5174



WE ARE award-winning developers, designers, builders, civil engineers, architects, surveyors, and real estate professionals who take a hands-on approach to building. Founded in 1964, our visionary, design-intensive organization specializes in creating innovative homes and communities built to the highest industry standards. With one-third of our business being referral-driven, we know we are doing something right. Our business philosophy is to think outside of established norms and offer a product that the market will love. Long before buzz words like smart growth came into vogue, we developed a new land planning concept the marketing consultants said wouldn't work and the zoning codes wouldn't allow. Nevertheless, we boldly introduced what we call the TNC or Town N' Country design to

the market, the first of its kind in the nation. This new land planning concept required a rewrite of the zoning ordinance and achieved an orchestrated blend of town center formality with environmentally friendly, country informality in the surrounding neighborhoods. As a result of those efforts, Wormald received state, national, and even international acclaim for the concepts introduced through TNC design. Our leadership as smart growth pioneers has earned recognition from such prestigious organizations as the Urban Land Institute, the Chesapeake Bay Foundation, the Coalition for Smarter Growth, the Metropolitan Builders Council, the Greater Washington Board of Trade, the National Association of Home Builders, and the state of Maryland Economic Growth, Resource Protection, and Planning Commission.



01 Single Family Detached

Landsdale	7
Wild Oak	12
Bennett Preserve	14
The City Home Collection at Crown	19
The Estate Home Collection at Crown	23
Spring Hollow	29
Brentwood Springs	31
Beallair	33
Worman's Mill River View Estates	39
The Links at Gettysburg	43

02 Single Family Attached

Quarry Springs	49
Vanderbilts On The Green	54
The Georgetown Collection	59
River Place	63
Worman's Mill Chateaus	67
Monocacy Park	70
The Boulevard Townhomes	75
Worman's Mill Villas	78
Woodlands Preserve At West Winds	83

03 Condominiums

Cascades View	87
The Montrachet	91
Park Place	95
The Tuscarora	96

04 Commercial, Apartments, and Retail

Village Crossing Senior Living	103
The Village at Worman's Mill Apartments and Retail	104
Westview Office Campus	109
Worman's Mill Clubhouse	113

05 Signature Properties

115

06 Wormald History

124

07 Awards

133



SINGLE FAMILY DETACHED

LANDSDALE

WILD OAK

BENNETT PRESERVE

THE CITY HOME COLLECTION AT CROWN

THE ESTATE HOME COLLECTION AT CROWN

SPRING HOLLOW

BRENTWOOD SPRINGS

BEALLAIR

WORMAN'S MILL RIVER VIEW ESTATES

THE LINKS AT GETTYSBURG



LANDSDALE

Wormald brings the extremely popular farmhouse trend to Frederick County's best-selling planned community of Landsdale. It features open floor plans, natural stone, metal roofs, black-framed windows, beamed ceilings, barn doors, covered porches, patios, and has the perfect spaces for multi-generational living. The community boasts a 6,000 square foot American Craftsman-style clubhouse with an eight-lane Olympic-sized pool, zero entry leisure pool, tennis courts, sport court, trails, outdoor amphitheater, playground, and tot lot. Terrific shopping is just minutes up the road at The Villages at Urbana where you'll find a Giant grocery store, restaurants, and plentiful services. Golfers will love the proximity to Whiskey Creek Golf Club. Premium wooded homesites available.









WILD OAK

In 1927, Business Week publisher, Merle Thorpe, chose this location as prime real estate to build his mansion. Thorpe named the location "Pook's Hill", after the "Puck of Pook's Hill", a popular poem by Kipling, which was made famous when T.S. Eliot included the poem in one of his compilations. In 1940, the Crown Princess of Norway bought the mansion and enlarged it, bringing further renown to this location. Today, a luxury enclave of beautiful new homes, Wild Oak, graces the top of historic Pook's Hill. The homes of Wild Oak were custom-designed by Wormald Design Studio, based on Wormald's decades-long experience of building homes in the local market (not to mention their grandfather who built Wildwood Shopping Center just down the street!). Every detail and specification celebrates the latest design trends in the market today. This exclusive wooded enclave provides a rare opportunity to live in fresh, new, transitional architecture which includes open floor plans, elevators, and outdoor living spaces. The newly renovated YMCA is just down the street, as well as abundant shopping opportunities including Wildwood Shopping Center, Montgomery Mall, and Downtown Bethesda, all just minutes away.

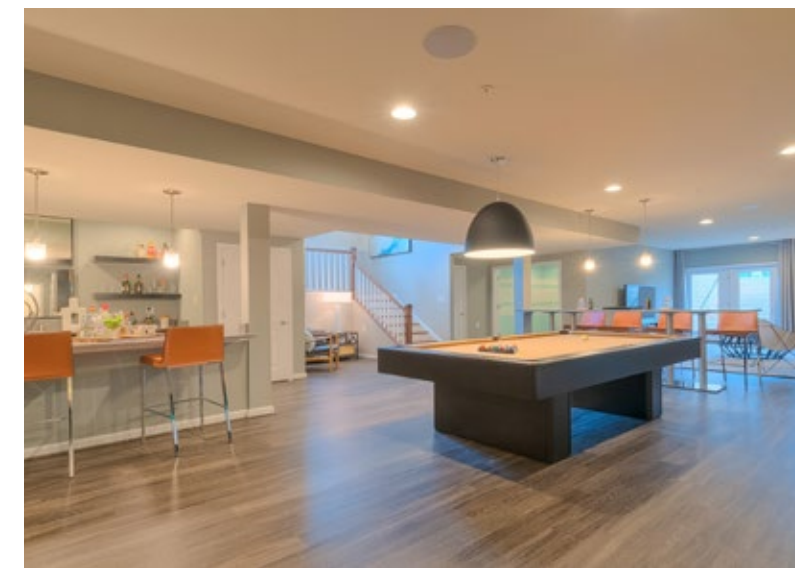
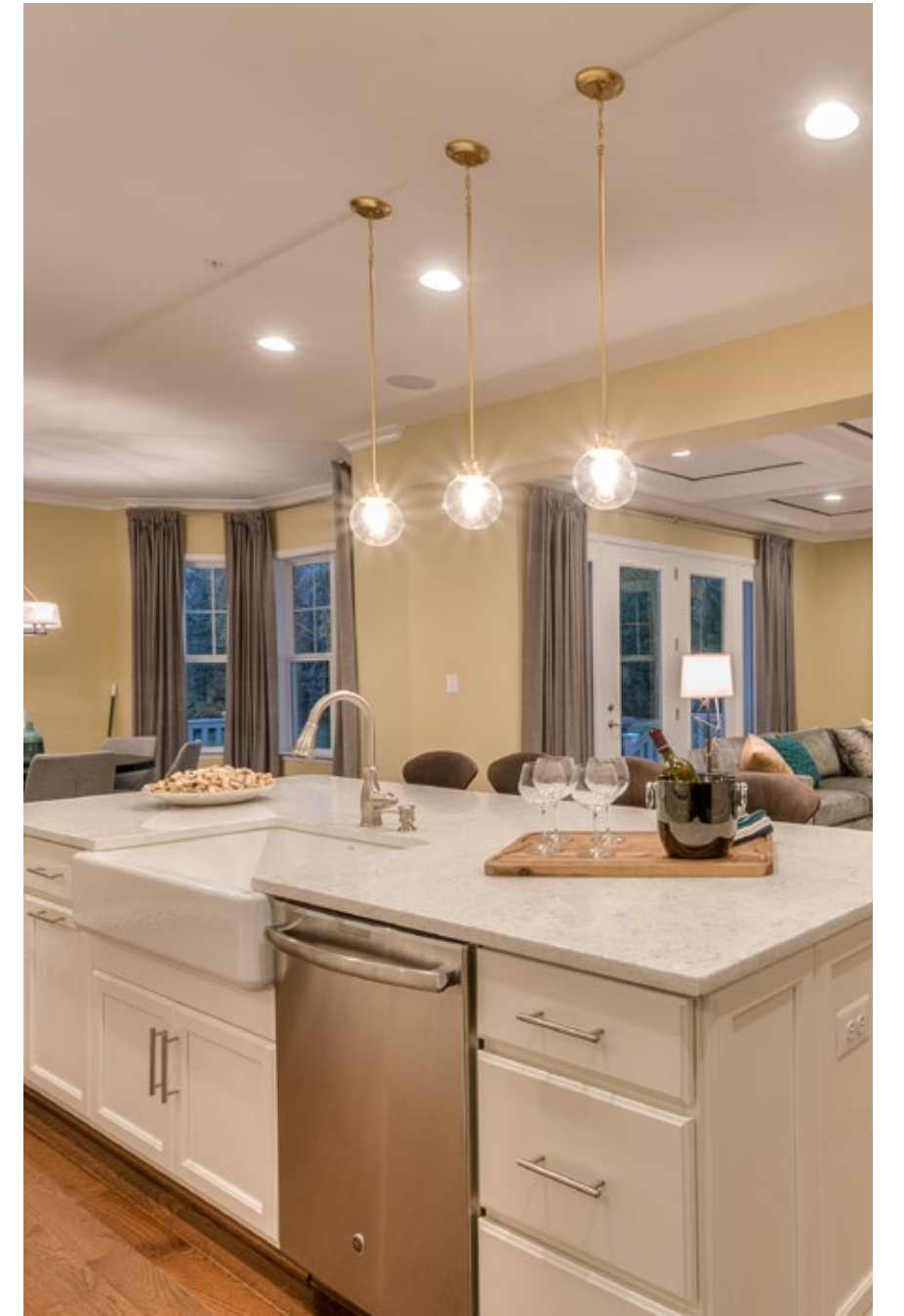




BENNETT PRESERVE

This community is a new enclave of award-winning, luxury estate homes in the bucolic countryside of Frederick County. These open floor plans are highly sought-after and energy-efficient. They feature grand island kitchens, tremendous owner's suites, large recreation rooms, and exciting optional outdoor living environments. The community features estate-sized homesites ranging from one to four-acres and is set among rolling hills interspersed with mature forests and provides outstanding vistas. The location provides quick access to Interstate 270, Little Bennett Golf Course, Clarksburg Premium Outlets, and is surrounded by parks and forests which cater to outdoor enthusiasts.

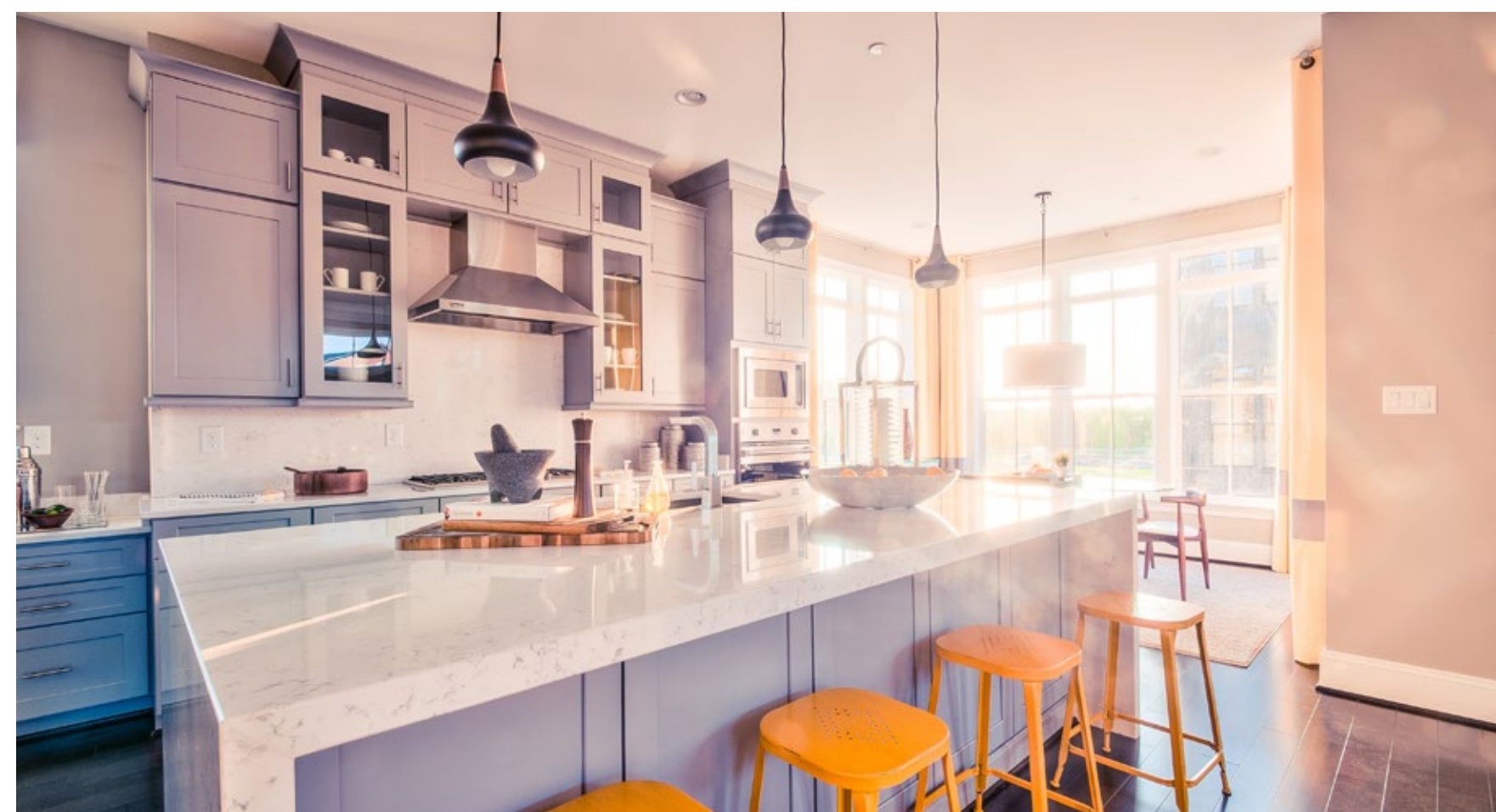
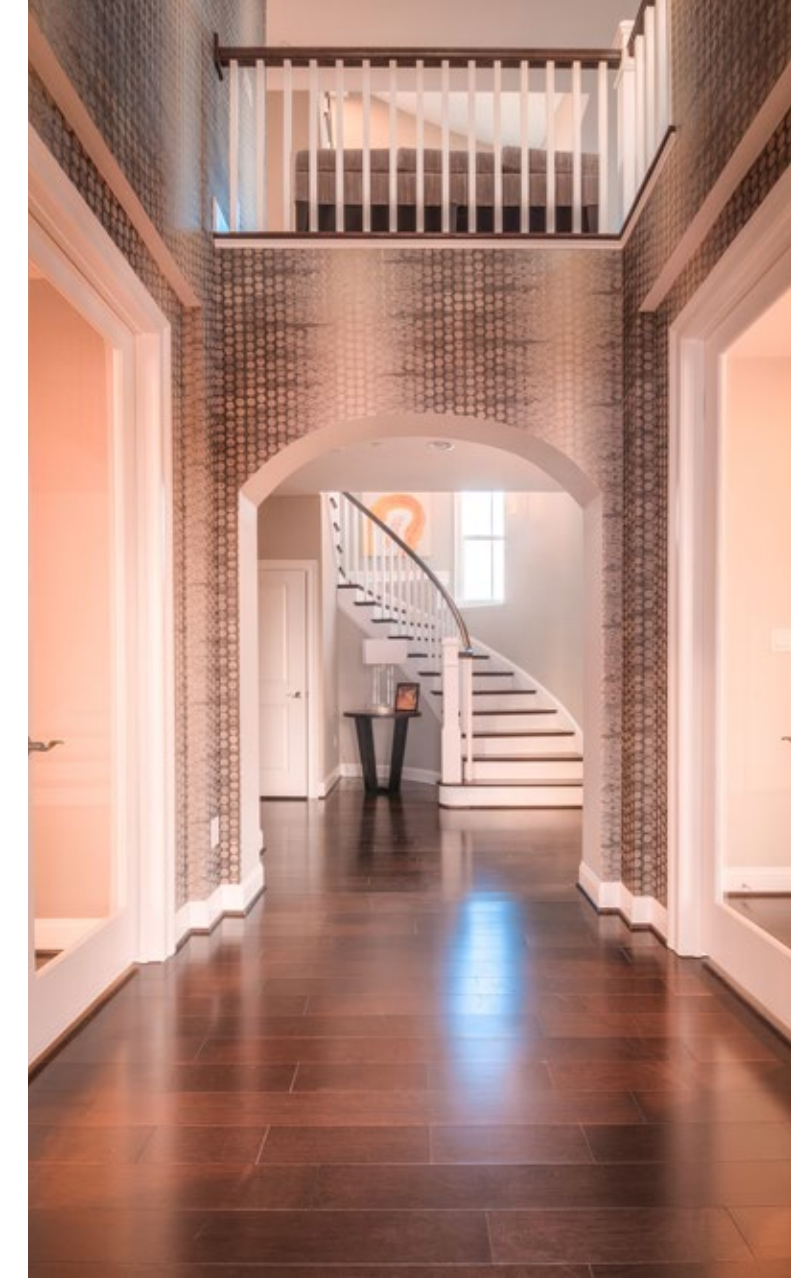






THE CITY HOME COLLECTION AT CROWN

In the heart of Montgomery County, at the crossroads of I-270 and I-370, Wornald constructed an urban village of the most fashionable new single family homes available in the DC area. The City Home Collection sits on the edge of a park and wooded trails. It is within walking distance to The Retreat clubhouse and pools, as well as a market, fitness center, boutique shopping, and upscale dining. The City Home Collection features three-car garages, penthouse lofts, elevators, Viking appliances, ten-foot ceilings, and modern island kitchens that open to great rooms. These additionally include sunrooms, grand terrace, owner's retreats, rooftop terraces, three to five bedrooms, and two and one-half to four and one-half baths. The community features a yard maintenance program to insure its long-term beauty.

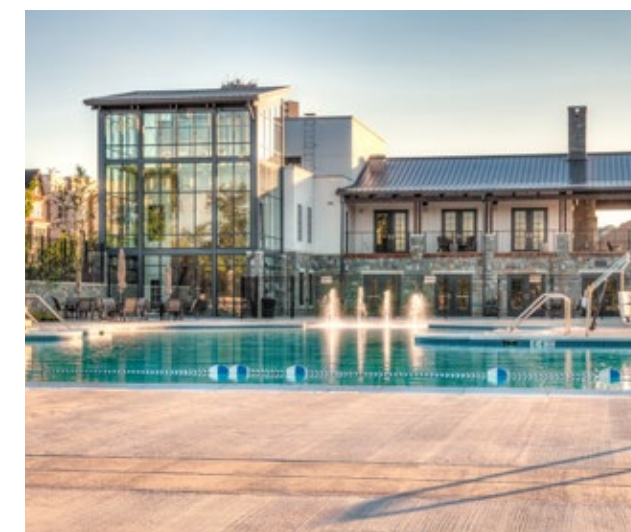




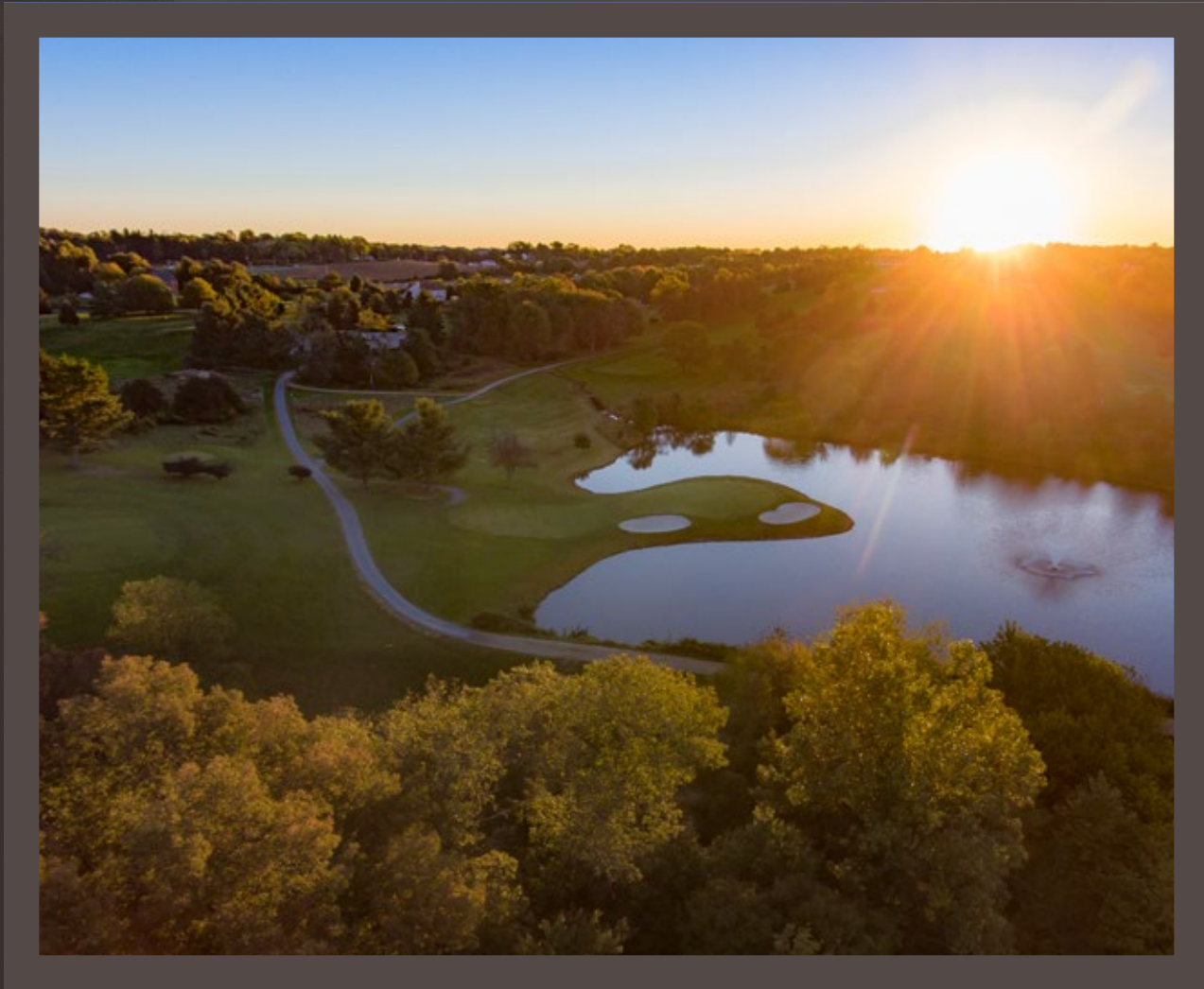
THE ESTATE HOME COLLECTION AT CROWN

Imagine waking up in a luxurious, old world estate home overlooking woods or a manicured park. Cutting-edge façades, superior quality and architectural perfection, set in a sought-after location. Open your front door and stroll just a few blocks to have your morning coffee at La Madeleine or Starbucks, spend the afternoon poolside or working out at The Retreat or LA Fitness, then walk to dinner at Ruth's Chris Steak House, Old Town Pour House, Ted's Bulletin, or Coastal Flats. Crown living at its best. The award-winning Estate Collection features first or second floor owner's suites, Viking appliances, ten-foot ceilings, modern island kitchens, three to five bedrooms, two and one-half to five and one-half baths, screened porches, rooftop terraces, optional elevators, and a yard maintenance program.









SPRING HOLLOW

Spring Hollow at Holly Hills Country Club is within walking distance or golf cart ride to one of the area's most respected private clubs and golf courses. Spring Hollow features just fourteen custom-designed, estate-sized homesites, each nearly an acre, with forested views and open, modern floor plans, grand island kitchens, and exciting outdoor living environments. Just minutes from Interstate 70, Lake Linganore, New Market, "the antiques capital of Maryland," and downtown Frederick.





BRENTWOOD SPRINGS

This community features beautifully designed homes in a lovely setting with a comfortable, convenient lifestyle in Loudoun County, Virginia. These homes feature first-floor owner's suites, one-level living plans, and traditional floor plans that are sure to meet a variety of customer needs and space requirements. Also included is a yard maintenance program that handles mowing, raking, and shoveling, which allows residents the flexibility to pursue their hobbies without having to contend with time-consuming yardwork.



BEALLAIR

A former George Washington family plantation in the Harper's Ferry District is now a signature gated community in an exquisite natural oasis. Often cited as the "best place to retire in the DC region," residents enjoy low West Virginia taxes and superior values on real estate — all within a 25-mile radius of every conceivable amenity and direct access to D.C. on the nearby MARC train. These multi-award-winning homes feature: first floor owner's suites, two-car garages, gourmet kitchens, one-level living, a yard maintenance program, an upcoming clubhouse with swimming pools, and convenient retail.



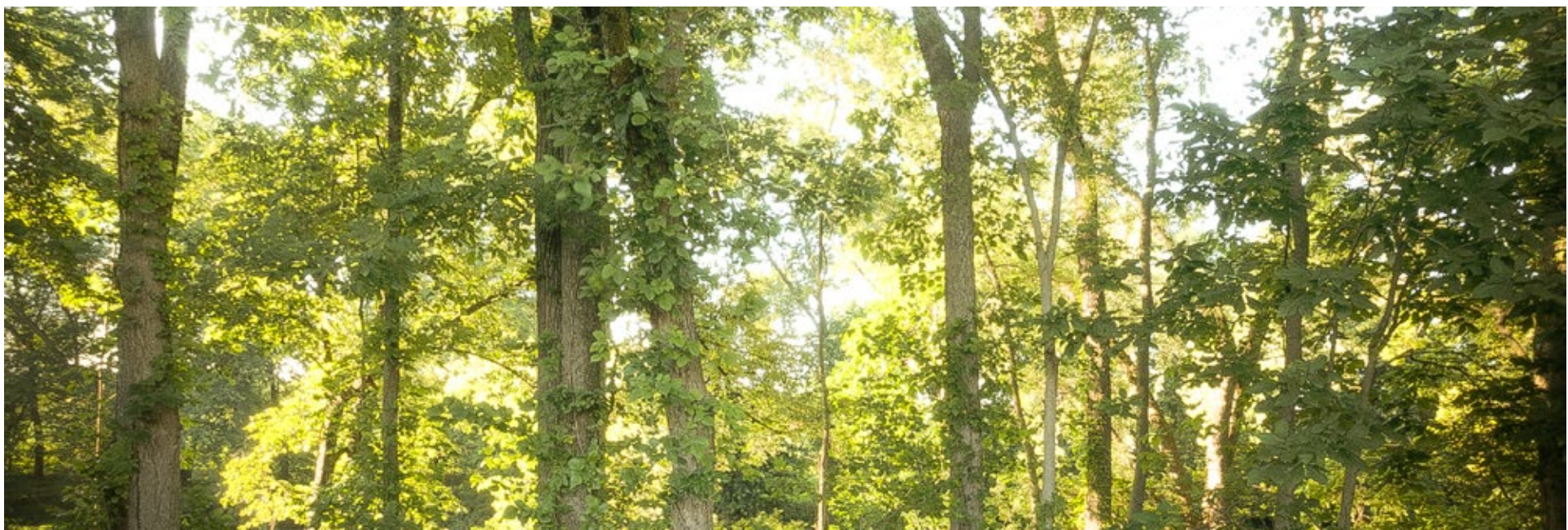






WORMAN'S MILL RIVER VIEW ESTATES

The River View Estate Collection is a limited set of private, scenic homesites set high above the Monocacy River in the award-winning community of Worman's Mill featuring scenic wooded and river views, first-floor owner's suites, open floor plans, gourmet chef's kitchens, optional elevators, two to five-and-one-half baths, and three to six bedrooms.





THE LINKS AT GETTYSBURG

This resort-style community of elegant, award-winning homes is surrounded by 340 acres of mature hardwood forests, rolling hills, rippling brooks, waterfalls, and 10 lakes. Nestled around a famous four-and-a-half star golf course, the homes feature first-floor owner's suites, two-car garages, gourmet kitchens, one-level living, and elevations made of stone, brick, and stucco. The neighborhood shows much character with brick paved streets and driveways in addition to landscaped pocket parks. Residents enjoy maintenance-free living with in-ground sprinklers, two clubhouses, a swimming pool, fitness center, and trails. All of this is within close proximity to ski resorts and historic Gettysburg National Park.



SINGLE FAMILY ATTACHED

QUARRY SPRINGS

VANDEBILTS ON THE GREEN

THE GEORGETOWN COLLECTION

RIVER PLACE

WORMAN'S MILL CHATEAUS

MONOCACY PARK

THE BOULEVARD TOWNHOMES

WORMAN'S MILL VILLAS

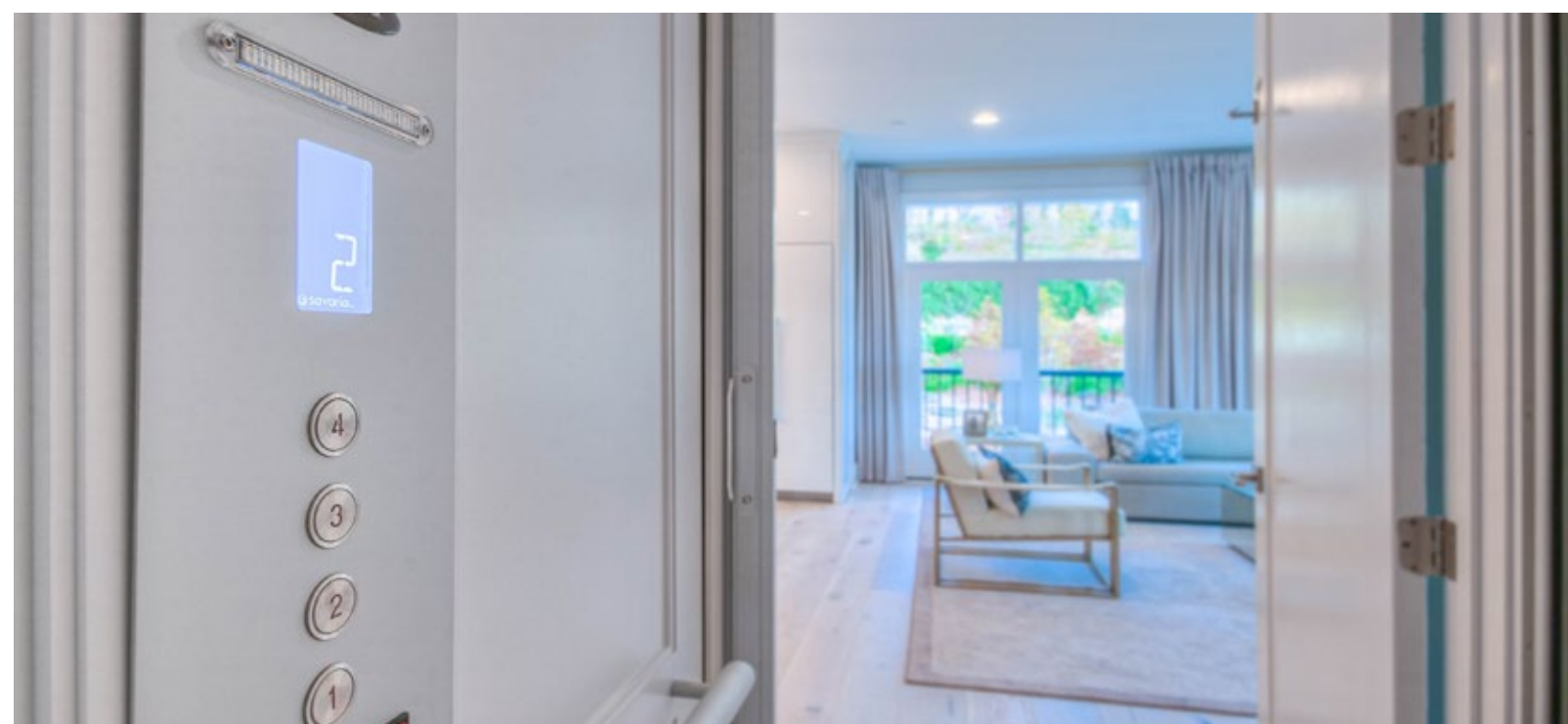
WOODLANDS PRESERVE AT WEST WINDS



QUARRY SPRINGS

This fully-maintained community is a pinnacle of luxury living in the D.C. area offering exquisite elevator rooftop terrace townhomes in a beautiful, established, resort-style community. It features a 24-hour gated entry, waterfall park and rock garden, swimming pool and hot tub, and a five-star 10,000 square foot clubhouse featuring: a game room, library, catering kitchen, conference room, and a 1,000 square foot fitness center with yoga studio and steam/sauna rooms. The 44 signature townhomes feature innovative architecture designed with European influences, elevators, modern open floor plans, grand island kitchens, walk-in pantries, and a spectacular rooftop experience. Quarry Springs was voted the best townhouse in the United States by the National Association of Homebuilders in 2021.







VANDERBILTS ON THE GREEN

Overlooking the parks of EastChurch is a chic collection of townhomes. We've meticulously crafted them to be the ultimate townhome, pulling from the historic district precedents of downtown Frederick, such as tall windows, grand entrance details, angled accent towers on each façade, cascading brick detailing, and ornate parapet trim. The homes feature an open floor plan with a grand terrace off the great room, making the main level ideal for entertaining guests by providing a seamless flow between the indoor and outdoor living areas. Popular options include: an elevator, a three-car garage, four bedrooms, a wine collection showcase vault, a rooftop luxe suite, an expansive rooftop terrace, a circular staircase, a freestanding soaking tub, and a great room entertainment wall.







THE GEORGETOWN COLLECTION

Live within walking distance of one of the most celebrated downtowns in our nation — hip and historic downtown Frederick with its Pre-Revolutionary War history, lively arts scene, signature restaurants, side-walk cafés, boutique shops, outdoor entertainment, and myriad of street festivals, farmer's markets, and historic tours. Custom-designed by the Wormald Design Studio, The Georgetown Collection at the master planned community of EastChurch, is both innovative and luxurious featuring: open modern floor plans, two-car garages, 2,000 to 2,890 square feet, Georgetown patios, lofts with roof terraces, grand island kitchens, bay windows, entrance porticos, grand stairwells, signature "tower room" with 12 to 13 foot ceilings, brick elevations, three to four bedrooms, two-and-one-half to four-and-one-half baths — all within walking distance to the clubhouse, pools, fitness facilities, and trails.







RIVER PLACE

Wormald has developed four-level city townhomes with three to four bedrooms, and two-and-one-half baths with up to four-and-one-half baths available. All with attached one- or two-car garages. The three floor plans are the Callahan, the Gramercy, and the Berkeley. They feature loft-style living with big, open floor plans that showcase gourmet island kitchens, gorgeous tall windows that let in lots of natural sunlight, and an open rooftop sky terrace for outdoor entertaining. At River Place, you're in the center of tremendous retail within a one-mile radius, allowing you to stroll over to Wegmans and Giant for groceries, Starbucks for your morning kick-start, At Home to jazz up the decor of your new home, and Onelife Fitness to stay energized. Several ballfields and the Monocacy River path system are just outside your front door. River Place is within minutes of historic downtown Frederick with hip and trendy restaurants, shops, antiquing, art galleries, and events galore. No more yard work — lawn care and snow removal is included.

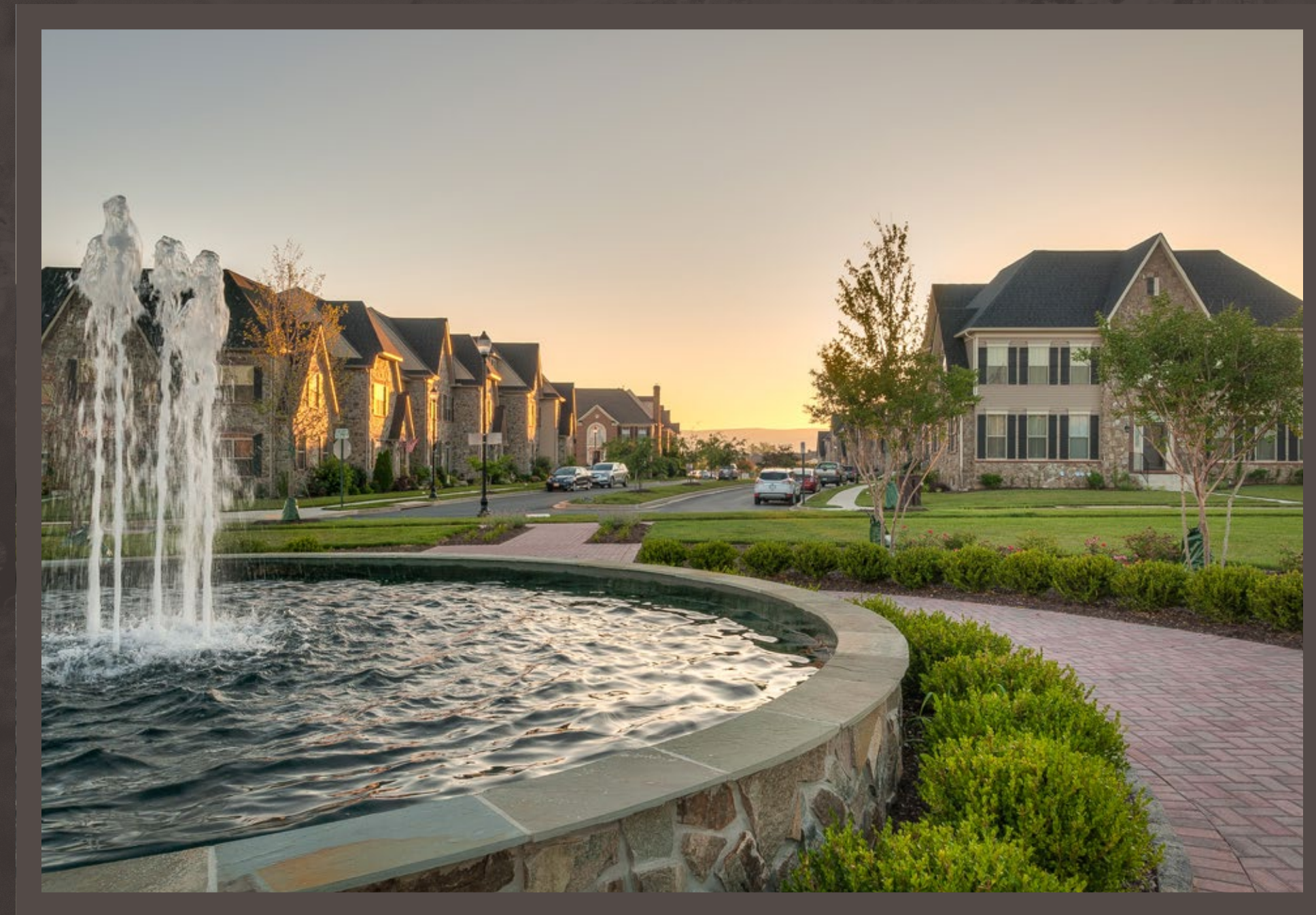


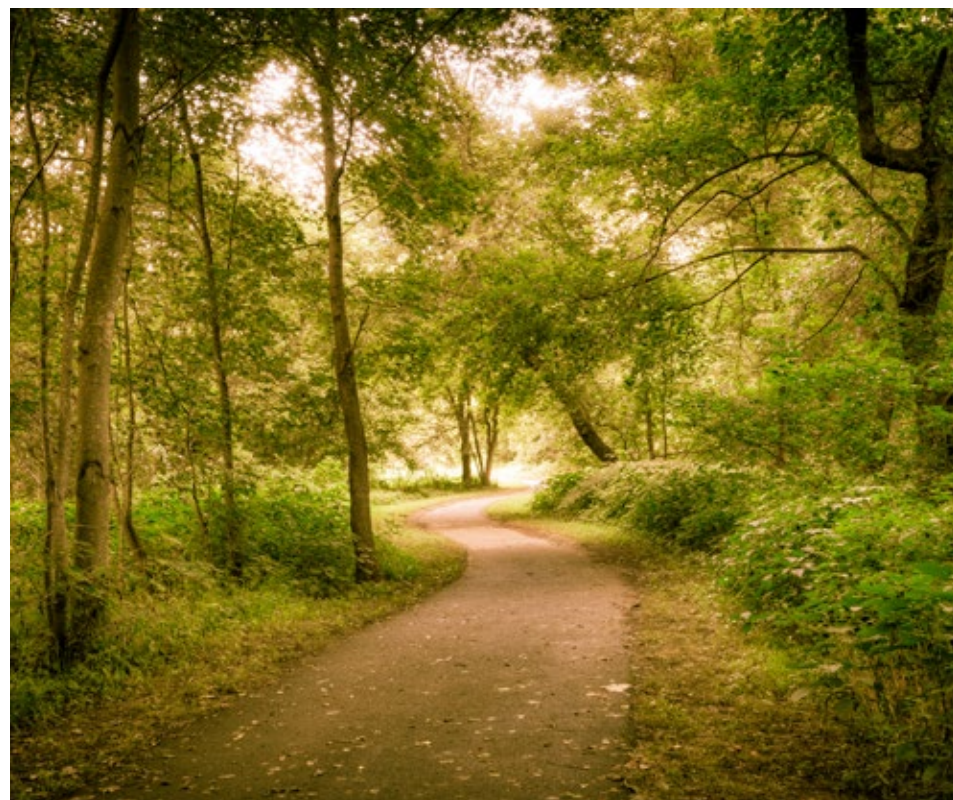




WORMAN'S MILL CHATEAUS

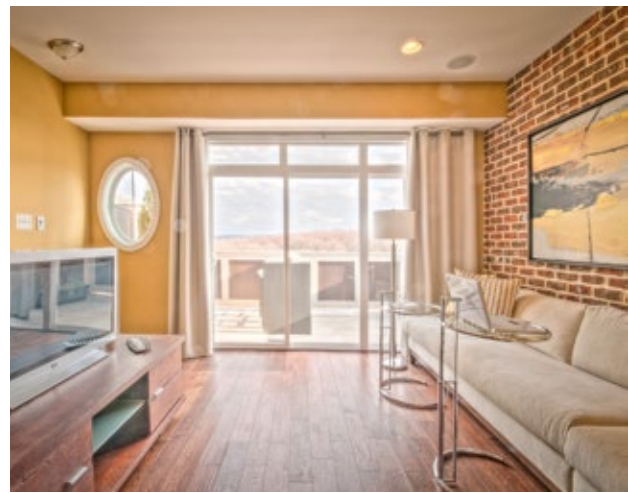
The ultimate in townhome living set in the upscale, master planned community of Worman's Mill, complete with a Village Center, clubhouse, swimming pools, tennis, trails, and grand parks. The Chateaus are inspired by charming French village architecture with almost 4,000 square feet. They feature two-car garages, open floor plans, optional lofts, optional sky terraces, grand first- or second-floor owner's suites, island kitchens, two and one-half to four and one-half baths, three to four bedrooms and an optional elevator. These homes are also just minutes away from historic downtown Frederick with its lively arts scene, signature restaurants, sidewalk cafés, boutiques, and a farmer's market.





MONOCACY PARK

Introducing the boutique townhomes of Monocacy Park: affordable four-level luxury living along the Monocacy River in Frederick, Maryland. These Euro-American inspired townhomes feature New York loft-style kitchens, sky terraces, and brick interior walls. These fashionable townhomes are full of thoughtful features—like outdoor sky terraces and rich, stylish details close to shopping, dining, and all the attractions of historic Frederick.





THE BOULEVARD TOWNHOMES

These townhomes feature award-winning federal-style architecture, a two-car garage accessible off a private rear drive, and a private fenced in courtyard. They have optional fourth levels with charming dormer windows, angled ceilings, and optional fireplace. Set in the award-winning community of Worman's Mill, with 100 acres of stream valley parkland on one side and the Monocacy River on the other, walking trails, signature parks, swimming, tennis, basketball, and fitness center. Within walking distance is the grand clubhouse and signature restaurants, sidewalk café, ice cream parlor, boutique shops, and concerts on the green all in the heart of Worman's Mill. Minutes away is the vibrant city of Frederick with its renowned restaurant district, arts venues, theaters, Carroll Creek Promenade, and expansive city parks.

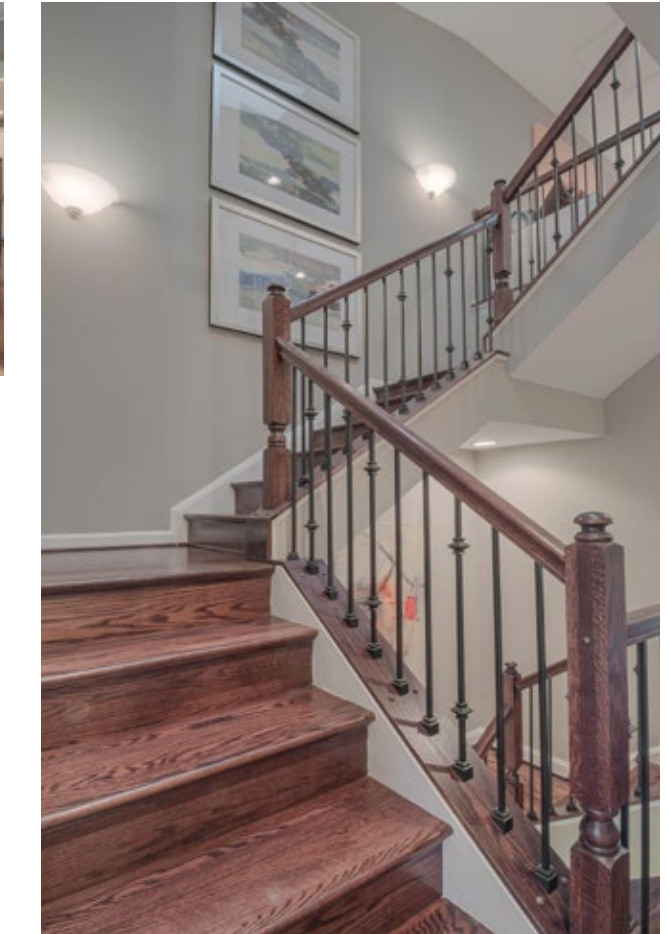


WORMAN'S MILL VILLAS

The standard in one-level living with all the main rooms, including the owner's suites on the main level. The upstairs loft and bedrooms are ideal for visiting guests or family members. These multi-award-winning villas feature optional elevators, two-car garages, open floor plans, island kitchens (including the famous octagonal kitchen), two-and-one-half to four-and-one-half baths, three to five bedrooms, and 2,693 to 5,210 square feet. The community of Worman's Mill features upscale amenities such as swimming, tennis, a clubhouse, walking trails, parks, and village square retail.







WOODLANDS PRESERVE AT WEST WINDS

Woodlands Preserve, a single line of attached homes, sets high on a ridge with spectacular valley views in one direction, and the West Winds golf course in the other. Every way you look is a breathtaking vista at Woodlands Preserve. Set in the premier Eaglehead master planned community, residents enjoy swimming, basketball, tennis, fitness, and golf. The Eaglehead community has four lakes with beaches and 30 miles of trails enjoyed exclusively by residents for sunbathing, canoeing, sailing, fishing, paddle boarding, kayaking, hiking, biking and other outdoor fun. These award-winning attached homes feature two-car garages, optional lofts, optional elevators, open floor plans, gourmet island kitchens, grand owner's suites and baths, and Wormald's signature resort-style architecture.



3 CONDO- MINIUMS

CASCADES VIEW

THE MONTRACHET

PARK PLACE

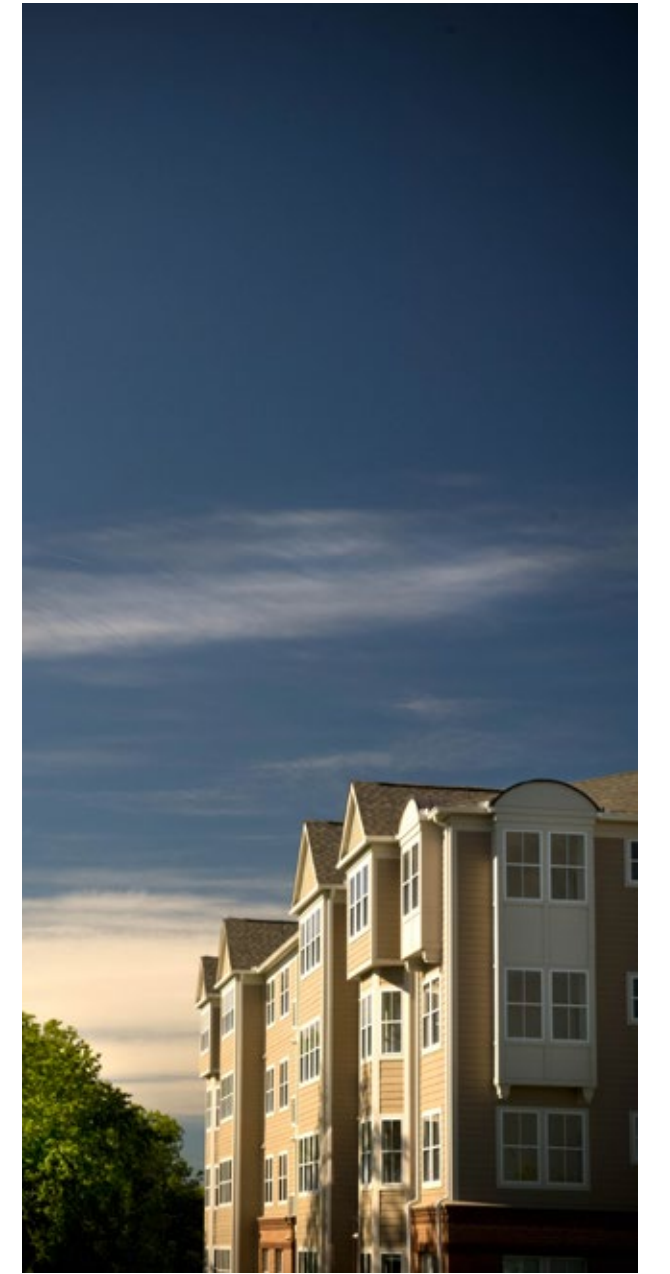
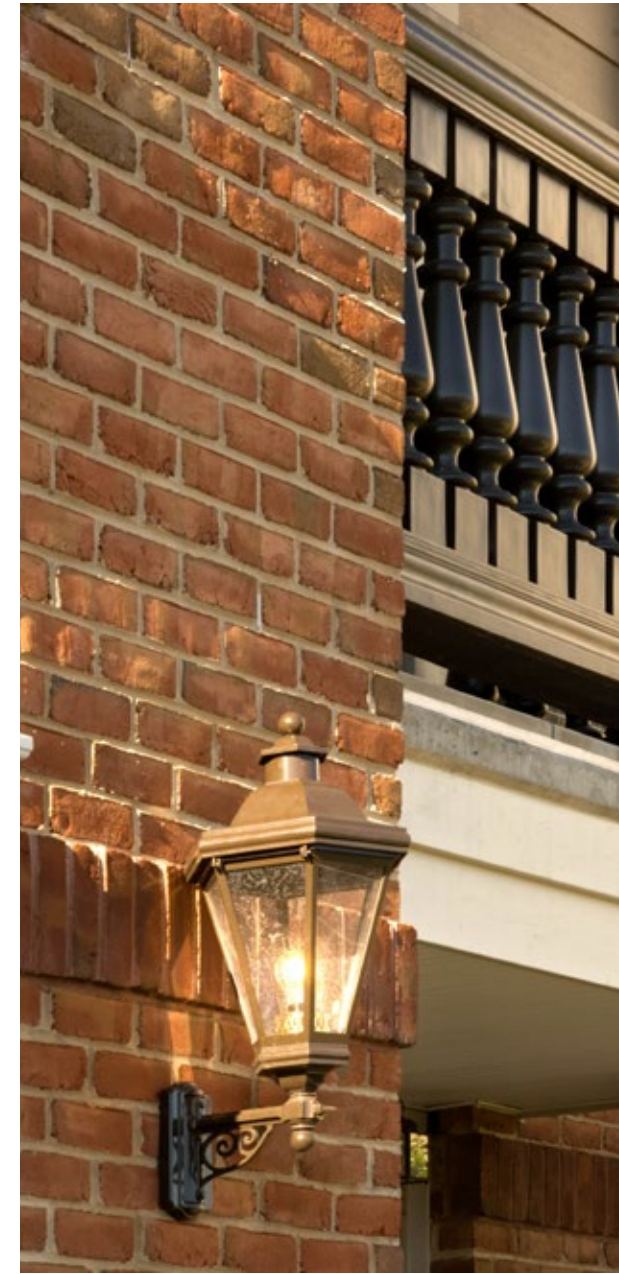
THE TUSCARORA



CASCADES VIEW

Set high on a hill above the resort-style retail oasis below, the two-level homes at Cascades View combine spectacular vistas and the convenience of a tremendous shopping and dining destination, including a gourmet grocer, just a short stroll away. The Crescent Collection at Cascades View introduces exciting crescent-shaped residences featuring open, modern floor plans and outdoor sky terraces. The Crescent Collection offers two models, each approximately 2,055 to 2,326 square feet in size with spacious outdoor terraces off the great room. Chef's kitchens have expansive islands and stainless steel appliances. Each home offers a home office, three bedrooms, two-and-one-half baths, and large storage closets. Surface and garage parking is available for residents. Walk to upscale retail including Harris Teeter, restaurants, and cafés. Cascades View offers the finest in modern, maintenance-free living set in a walkable urban oasis.





THE MONTRACHET

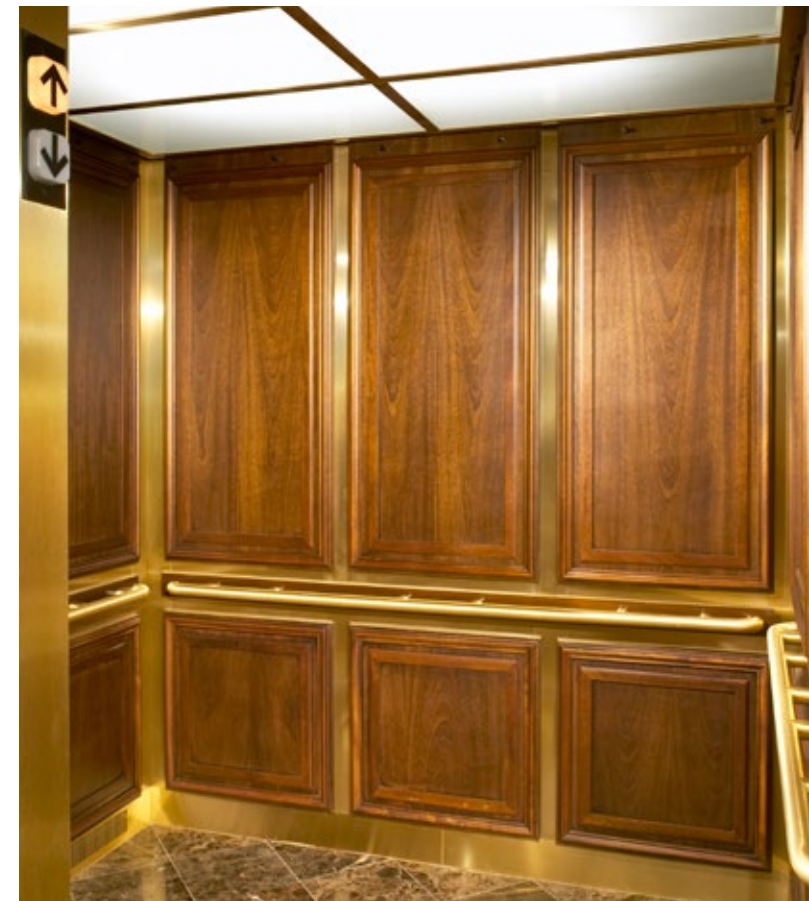
Wormald Commercial designed and built this award-winning luxury condominium building in Frederick, Maryland. This 54-unit project features secured enclosed garage parking, two elevators, solid concrete and steel construction, a secured lobby, and columned and arched corridors. Wormald's rigorous quality inspection program, with a multi-layered inspection process, including an outside third-party inspection team, is an example of Wormald's above and beyond approach to construction management.





PARK PLACE

Park Place is a two-building, 127-unit, award-winning condominium project located in the City of Frederick, Maryland. This project largely appeals to the empty-nester market by providing single-level living in luxury elevator buildings. The below-grade parking, Victorian garden, secured-access buildings, and fountains provide prime living residences.





THE TUSCARORA

This award-winning 52-unit condominium building is situated along the bucolic Tuscarora Creek at its confluence with the Monocacy River within the highly recognized community of Worman's Mill. The Tuscarora features concrete and steel construction, an underground parking garage, a secured lobby, columned and arched corridors, and spectacular park vistas within walking distance of the Worman's Mill Village Center.







**COMMERCIAL,
APARTMENTS,
AND RETAIL**



VILLAGE CROSSING SENIOR LIVING

Tucked into the exclusive Worman's Mill neighborhood off Route 26 and Monocacy Boulevard, this beautiful residence with private rental apartments is close to the charm and bustling activity of the Village Center. Residents have access to all the fine retail, dining, and exciting events for which The Village is known. Residents have the privacy they want and the amenities they love. Offering a choice of studio, one-bedroom, and two-bedroom apartments complete with kitchenette, full bath and many other features.



THE VILLAGE AT WORMAN'S MILL APARTMENTS AND RETAIL

Introducing The Village at Worman's Mill – timeless housing in Frederick, MD, offering seniors 55 and better some of the best retail and dining experiences in the City. Every community needs a heart, a place where the community becomes connected. At Worman's Mill, the Village is where the magic of community spirit comes alive: farmer's markets with fresh local organic produce, summer concerts on the green from acoustic to symphonic trios, happy hour, coffee groups, book clubs, ice cream socials, and date night! This is where Worman's Mill thrives.







WESTVIEW OFFICE CAMPUS

The campus consists of three signature office buildings each with three stories of Class A executive space in Frederick, Maryland. They have been designed for professional businesses including accountants, lawyers, doctors, and other high-end tenants. Wormald Commercial designed, built, and executed all engineering, land planning, development, and construction. Amenities include garage parking, elevators, an upscale lobby with granite flooring, arches and columns, and custom mouldings. This campus provides the first office underground parking constructed in Frederick County, Maryland.







WORMAN'S MILL CLUBHOUSE

This stately clubhouse was designed and built by Wormald Commercial for over 3,000 City of Frederick residents in the community of Worman's Mill. It is situated on a bluff overlooking the Tuscarora Stream Valley Park. It has three swimming pools, locker rooms, tennis courts, a basketball court, playground, library, grand center hall with barrel-vaulted fresco-painted ceiling, dance and exercise studio, and a billiards room.



A large, stylized logo consisting of the letters 'O' and 'B' in a dark brown color. The 'O' is a solid circle with a white cutout in the center. The 'B' is a solid shape with a white cutout in the center. The logo is overlaid on a faded, grayscale image of a two-story house with a stone fireplace and a porch.

**SIGNATURE
PROPERTIES**



SIGNATURE PROPERTIES

Signature Properties, a division of Wormald Homes, has specialized in building homes in the places where the Wormalds grew up and love. Signature Properties builds in established sought-after neighborhoods with excellent school districts and close proximity to the best retail venues around the DC beltway. The founder, Bob Wormald, grew up in Arlington, Virginia; his wife, Myra Wormald, grew up in Bethesda, Maryland; and the Wormald sons and daughter attended Churchill High School and grew up near the Potomac Village in Maryland. Many of the homes in their hometowns and surrounding neighborhoods are now obsolete in design and in disrepair. The vision of Wormald is to rejuvenate the neighborhoods they love by building beautiful new homes that meet the needs of this generation — homes where new families can plant themselves and flourish.

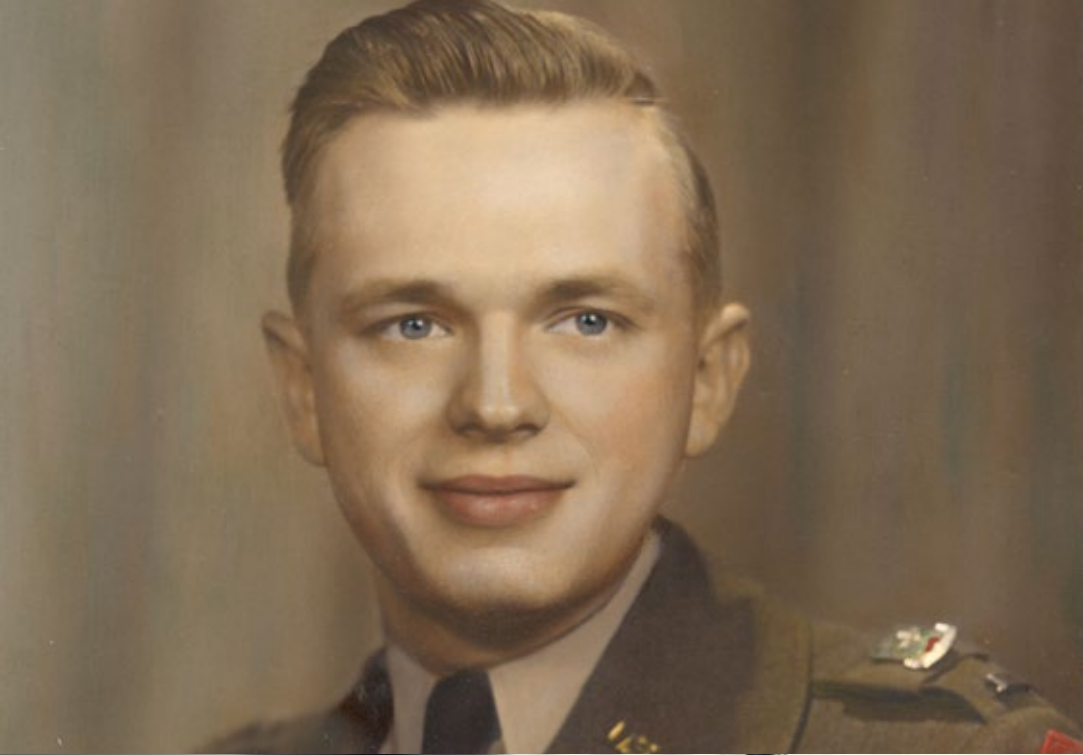






WORMALD HISTORY





1964

Bob Wormald begins the company in Potomac, MD



1986

Wormald Develops First Neo-Traditional Master Planned Community in the Mid-Atlantic



1999

Wormald Wins State of Maryland Smart Growth Award





2006

Wormald Ranks 2nd Fastest Growing Home Builder in the Nation



2010

Wormald Has Won Over 100 Design and Construction Awards



2014

Wormald Ranks Top 200 in the Nation and Top 20 in the DC Region





2020

120th largest homebuilder in the Nation according to Professional Builder Magazine



2021

Best townhome in the nation per NAHB



2021

Wrote \$200 million in new homes contracts in one year





OUTSTANDING HOME

WORMALD HOMES
The Vanderbilt

Presented By The
MBIA
Sales and Marketing Council



OUTSTANDING DESIGN & ARCHITECTURE

WORMALD HOMES
Gramercy at River Place

Presented By The
MBIA
Sales and Marketing Council



OUTSTANDING DESIGN & ARCHITECTURE

WORMALD HOMES
The Vanderbilt at East Church

Presented By The
MBIA
Sales and Marketing Council

AWARDS

A HISTORY OF AWARDS

YEAR	AWARD	SPONSOR	PRODUCT
1983	Best New Townhome in Its Class	PEPCO's Excellence in Energy Conservation Award	Essex Model, Manor Village
1987	"Build-Ability" Award Recognizing Overall Excellence In The Areas of Scheduling, Supervision, Engineering, Quality Control, And Ethics	Suburban Maryland Building Industry Association	
1989	Best Land Plan	Regional Finest for Family Living Awards for Maryland, Virginia and Washington, D.C.	The Community of Worman's Mill
1989	Best New Single Family Home in Its Class	FCBA Awards of Excellence	Hawthorne Model, Courtyard Homes
1989	Best New Single Family Home in Its Class	FCBA Awards of Excellence	Windsor Model, Courtyard Homes
1989	Best New Single Family Home in Its Class	Regional Finest for Family Living Awards for Maryland, Virginia and Washington, D.C.	Frederick Model
1989	Best New Single Family Home in Its Class	FCBA Awards of Excellence	Frederick Model, Courtyard Homes
1989	Best New Single Family Home in Its Class	FCBA Awards of Excellence	Devon Model, Courtyard Homes
1989	Project of the Year	MAME Awards	The Community of Worman's Mill
1989	Best New Single Family Home in Its Class	MAME Awards	Hawthorne Model, Courtyard Homes
1989	Best New Single Family Home in Its Class	FCBA Awards of Excellence	Somerset Model, Courtyard Homes
1990	Best New Single Family Home in Its Class	FCBA Awards of Excellence	Norwood Model, Courtyard Homes
1990	Best New Single Family Home in Its Class, Award of Merit	Regional Finest for Family Living Awards for Maryland, Virginia and Washington, D.C.	Windsor Model
1990	Best New Single Family Home in Its Class	Regional Finest for Family Living Awards for Maryland, Virginia and Washington, D.C.	Frederick Model
1990	Best New Community, Award of Merit	Regional Finest for Family Living Awards for Maryland, Virginia and Washington, D.C.	The Community of Worman's Mill
1990	Best New Single Family Home in Its Class	FCBA Awards of Excellence	Windsor Model, Courtyard Homes
1990	Best New Single Family Home in Its Class	FCBA Awards of Excellence	Norwood Model, Courtyard Homes
1990	Best New Single Family Home in Its Class, Award of Merit	Regional Finest for Family Living Awards for Maryland, Virginia and Washington, D.C.	Windsor Model
1990	Best New Single Family Home in Its Class	Regional Finest for Family Living Awards for Maryland, Virginia and Washington, D.C.	Frederick Model
1990	Best New Community, Award of Merit	Regional Finest for Family Living Awards for Maryland, Virginia and Washington, D.C.	The Community of Worman's Mill
1990	Best New Single Family Home in Its Class	FCBA Awards of Excellence	Windsor Model, Courtyard Homes
1995	Best New Townhome in Its Class	Regional Finest for Family Living Awards for Maryland, Virginia and Washington, D.C.	Annapolis Model, Village Green

YEAR	AWARD	SPONSOR	PRODUCT
1995	Best New Townhome in Its Class	Regional Finest for Family Living Awards for Maryland, Virginia and Washington, D.C.	Georgetown Model, Village Green
1995	Best New Townhome in Its Class	Regional Finest for Family Living Awards for Maryland, Virginia and Washington, D.C.	Federal Hill Model, Village Green
1995	Best New Community	MCBA Awards of Excellence	The Community of Worman's Mill
1996	Best New Single Family Home in Its Class	FCBA Awards of Excellence	Cotswold Model, Mill Station
1996	Best New Single Family Home in Its Class	Regional Finest for Family Living Awards for Maryland, Virginia and Washington, D.C.	Wakefield Model, Mill Station
1996	Best New Single Family Home in Its Class, Award of Merit	FCBA Awards of Excellence	Wakefield Model, Mill Station
1996	Best New Single Family Home in Its Class, Award of Merit	Regional Finest for Family Living Awards for Maryland, Virginia and Washington, D.C.	Kingswood Model, Mill Station
1996	Best New Single Family Home in Its Class	Regional Finest for Family Living Awards for Maryland, Virginia and Washington, D.C.	Cotswold Model, Mill Station
1996	Best New Community	FCBA Awards of Excellence	The Community of Worman's Mill
1997	Best New Condominium Residence in Its Class	Regional Finest for Family Living Awards for Maryland, Virginia and Washington, D.C.	Essex Model, Park Place
1999	Best New Condominium Residence in Its Class, Award of Merit	Regional Finest for Family Living Awards for Maryland, Virginia and Washington, D.C.	Belmont Model, Park Place
1999	Best New Condominium Residence in Its Class, Award of Merit	Regional Finest for Family Living Awards for Maryland, Virginia and Washington, D.C.	Savoy Model, Park Place
1999	Best Smart Growth Community	5th Annual Smart Growth Awards. Governor Parris N. Glendening. The Maryland Economic Growth, Resource Protection, and Planning Commission	The Community of Worman's Mill
2001	The Nation's Best New Smart Growth Community, Silver Award	National Best In American Living Awards by the National Association of Home Builders and Professional Builder Magazine	The Community of Worman's Mill
2001	The Nation's Best New Smart Growth Community, Silver Award	National Best In American Living Awards by the National Association of Home Builders and Professional Builder Magazine	The Community of Worman's Mill
2002	Best New Single Family Home in Its Class	Regional Finest for Family Living Awards for Maryland, Virginia and Washington, D.C.	Waterford Model, Palatine Courtyard Home
2002	Best New Single Family Home in Its Class, Award of Merit	Regional Finest for Family Living Awards for Maryland, Virginia and Washington, D.C.	Amherst Model, Palatine Courtyard Home
2002	Best New Condominium Residence in Its Class	Regional Finest for Family Living Awards for Maryland, Virginia and Washington, D.C.	Astoria Model, Park Place

YEAR	AWARD	SPONSOR	PRODUCT
2004	Best Custom Home in Its Class, Award of Merit	Regional Monument Award for Maryland, Virginia, Washington, D.C., West Virginia, and Pennsylvania	Hall Custom Home Residence
2004	Best New Attached Home in Its Class, Award of Merit	Regional Monument Award for Maryland, Virginia, Washington, D.C., West Virginia, and Pennsylvania	Strathmore Model, Mill Island
2004	Best New Single Family Home in Its Class, Award of Merit	Regional Monument Award for Maryland, Virginia, Washington, D.C., West Virginia, and Pennsylvania	Avignon Model, The Links at Gettysburg
2004	Best New Single Family Home in Its Class, Award of Merit	Regional Monument Award for Maryland, Virginia, Washington, D.C., West Virginia, and Pennsylvania	Savoy Model, The Links at Gettysburg
2004	Best Land Plan	Regional Monument Award for Maryland, Virginia, Washington, D.C., West Virginia, and Pennsylvania	Mill Island Land Plan, Worman's Mill
2004	Best New Attached Home in Its Class	Regional Monument Award for Maryland, Virginia, Washington, D.C., West Virginia, and Pennsylvania	Carrington Model, Mill Island
2004	Best New Attached Home in Its Class	Regional Monument Award for Maryland, Virginia, Washington, D.C., West Virginia, and Pennsylvania	Regency Model, Mill Island
2004	Best New Condominium Residence in Its Class	Regional Monument Award for Maryland, Virginia, Washington, D.C., West Virginia, and Pennsylvania	Willard Model, Park Place
2006	Best New Single Family Home in Its Class	Homebuilders Association of Maryland MAX Award	Barclay Model at Worman's Mill
2006	Best New Townhome in Its Class, Award of Merit	Regional Monument Award for Maryland, Virginia, Washington, D.C., West Virginia, and Pennsylvania	Bentley Model at Worman's Mill
2006	Best New Single Family Home in Its Class	FCBA Awards of Excellence	Avignon at The Links at Gettysburg
2006	Best New Townhome in Its Class	FCBA Awards of Excellence	Bentley at Worman's Mill
2006	Best New Townhome in Its Class	Homebuilders Association of Maryland MAX Award	Bentley Model at Worman's Mill
2006	WINNER - Best Interior Merchandising for a Townhome	Homebuilders Association of Maryland MAX Award	Claridge Model at Worman's Mill
2006	Best PUD/PND/MXD	FCBA Awards of Excellence	Worman's Mill
2006	Best New Townhome in Its Class	Regional Monument Award for Maryland, Virginia, Washington, D.C., West Virginia, and Pennsylvania	Regency Model at Worman's Mill
2006	Smart Growth Recognition Program, One of the Best "Up and Coming" Smart Growth Projects in the DC Region	Smart Growth Alliance comprised of The Urban Land Institute, The Chesapeake Bay Foundation, The Coalition for Smarter Growth, The Metropolitan Washington Builders' Council, and The Greater Washington Board of Trade	The Galleria at Carroll Creek
2006	WINNER - Best Interior Merchandising for a Multi-family/Condominium Residence	Homebuilders Association of Maryland MAX Award	Willard Model at Park Place at Worman's Mill
2006	WINNER - Best Interior Merchandising for a Townhome	Homebuilders Association of Maryland MAX Award	Bentley Model at Worman's Mill
2006	Best New Condominium in Its Class, Honorable Mention	Regional Monument Award for Maryland, Virginia, Washington, D.C., West Virginia, and Pennsylvania	Ashley Model at Park Place at Worman's Mill
2006	Best New Townhome in Its Class	Homebuilders Association of Maryland MAX Award	Claridge Model at Worman's Mill
2006	Best New Townhome in Its Class	Regional Monument Award for Maryland, Virginia, Washington, D.C., West Virginia, and Pennsylvania	Wentworth Model at Worman's Mill

YEAR	AWARD	SPONSOR	PRODUCT
2006	Best Public Space	FCBA Awards of Excellence	Arbor Square Park at Worman's Mill
2006	Best New Townhome in Its Class	FCBA Awards of Excellence	Claridge Model at Worman's Mill
2006	Best New Condominium in Its Class	Regional Monument Award for Maryland, Virginia, Washington, D.C., West Virginia, and Pennsylvania	Astoria Model at Park Place at Worman's Mill
2006	Best New Condominium in Its Class	Regional Monument Award for Maryland, Virginia, Washington, D.C., West Virginia, and Pennsylvania	Willard Model at Park Place at Worman's Mill
2006	Best New Townhome in Its Class	Homebuilders Association of Maryland MAX Award	Regency Model at Worman's Mill
2006	Best New Condominium Residence in Its Class	FCBA Awards of Excellence	Willard Model at Park Place at Worman's Mill
2006	Best New Single Family Home in Its Class	Homebuilders Association of Maryland MAX Award	Amherst Model at Worman's Mill
2006	Best New Single Family Home in Its Class	FCBA Awards of Excellence	Amherst at Worman's Mill
2006	Best New Condominium Residence in Its Class	Homebuilders Association of Maryland MAX Award	Willard Model at Park Place at Worman's Mill
2008	Best Architectural and Structural Designs Award - Residential Projects	Professional Masonry Association	The Montrachet at Worman's Mill
2008	Best New Single Family Attached Home in Its Class	EPHBA Parade of Homes	Jefferson Model at Beallair
2008	Best Bathroom for a Single Family Attached Home in Its Class	EPHBA Parade of Homes	Jefferson Model at Beallair
2010	HOME OF THE YEAR (Best Detached Home in the Region All Categories Combined)	Regional Great American Living Award for Maryland, Virginia, Washington, D.C., West Virginia, and Pennsylvania	The Le Beaux at Worman's Mill
2010	Best New Single Family Home in Its Class	Frederick County Builder's Association	The Summerhill at Beallair
2010	Best New Attached Residence in Its Class	Frederick County Builder's Association	The Mayfair at Worman's Mill
2010	Best New Condominium Residence in Its Class	Frederick County Builder's Association	The Chambertin at the Montrachet at Worman's Mill
2010	Best New Attached Residence in Its Class	Frederick County Builder's Association	The Jefferson at Beallair
2010	Best Interior Merchandising for a Detached Home 3,801 to 4,800 Square Feet	Regional Great American Living Award for Maryland, Virginia, Washington, D.C., West Virginia, and Pennsylvania	The Le Beaux at Worman's Mill
2010	Best Design and Architecture for an Attached Home 3,301 to 3,900 Square Feet	Regional Great American Living Award for Maryland, Virginia, Washington, D.C., West Virginia, and Pennsylvania	The Mayfair Villa at Worman's Mill
2010	Best Design and Architecture for a Detached Home 3,801 to 4,800 Square Feet	Regional Great American Living Award for Maryland, Virginia, Washington, D.C., West Virginia, and Pennsylvania	The Le Beaux at Worman's Mill
2010	Highest Sales Volume for All Privately Held Home Builders in Frederick County		Wormald Homes
2010	Best New Single Family Home in Its Class	Frederick County Builder's Association	The Summerhill at Beallair
2010	Best New Attached Residence in Its Class	Frederick County Builder's Association	The Mayfair at Worman's Mill
2010	Best New Condominium Residence in Its Class	Frederick County Builder's Association	The Chambertin at the Montrachet at Worman's Mill

YEAR	AWARD	SPONSOR	PRODUCT
2010	Best New Attached Residence in Its Class	Frederick County Builder's Association	The Jefferson at Beallair
2010	Highest Sales Volume for All Privately Held Home Builders in Frederick County		Wormald Homes
2011	Best Design and Architecture for a Single Family Home \$600,000 to \$650,000	State of Maryland Awards of Excellence	The Wakehurst
2011	Best Single Family Home Merchandising Transfer \$1 Million and Over	State of Maryland Awards of Excellence	The Le Beaux at Worman's Mill
2011	PEOPLE'S CHOICE AWARD (Best In Show All Categories Combined)	State of Maryland Awards of Excellence	The Le Beaux at Worman's Mill
2011	Best Design and Architecture for an Attached Home, Including Townhomes, Two over Twos, Back to Back Townhomes and Duplexes, \$300,000 - \$350,000	Great American Living Awards	The Notting Hill at Monocacy Park
2011	Best Design and Architecture for a Townhome \$400,000 to \$500,000	Frederick County Awards of Excellence	The Notting Hill of Monocacy Park
2011	Best Design and Architecture for a Single Family Home \$700,000 to \$849,999	State of Maryland Awards of Excellence	The Summerhill
2011	Best Townhome Merchandising \$400,000 to \$499,999	State of Maryland Awards of Excellence	The Notting Hill of Monocacy Park
2011	Best Design and Architecture for an Attached Home \$500,000 to \$599,999	State of Maryland Awards of Excellence	The Mayfair of the Wellington Villas
2011	Best Design and Architecture for a Single Family Home \$1.5 to \$2 million	Frederick County Awards of Excellence	The Le Beaux at Worman's Mill
2011	Best Townhome Merchandising \$300,000 to \$399,999	State of Maryland Awards of Excellence	The Camden of Monocacy Park
2011	Best Design and Architecture for a Townhome \$300,000 to \$349,999	State of Maryland Awards of Excellence	The Camden of Monocacy Park
2011	Best Multi-Family Project	Frederick County Awards of Excellence	Monocacy Park
2011	Best Design and Architecture for a Townhome \$400,000 to \$499,999	State of Maryland Awards of Excellence	The Notting Hill of Monocacy Park
2011	Best Interior Merchandising for an Attached Home, Including Townhomes, Two over Twos, Back to Back Townhomes and Duplexes, Under \$300,000	Great American Living Awards	The Camden at Monocacy Park
2011	Best Interior Merchandising for an Attached Home, Including Townhomes, Two over Twos, Back to Back Townhomes and Duplexes, \$300,000 - \$350,000	Great American Living Awards	The Notting Hill at Monocacy Park
2011	Best Design and Architecture for a Single Family Home \$1 Million and Over	State of Maryland Awards of Excellence	The Le Beaux at Worman's Mill
2011	Best Design and Architecture for an Attached Home, Including Townhomes, Two over Twos, Back to Back Townhomes and Duplexes, Under \$300,000	Great American Living Awards	The Camden at Monocacy Park
2011	Best Design and Architecture for a Single Family Home \$600,000 to \$650,000	State of Maryland Awards of Excellence	The Wakehurst

YEAR	AWARD	SPONSOR	PRODUCT
2011	Best Single Family Home Merchandising Transfer \$1 Million and Over	State of Maryland Awards of Excellence	The Le Beaux at Worman's Mill
2011	PEOPLE'S CHOICE AWARD (Best In Show All Categories Combined)	State of Maryland Awards of Excellence	The Le Beaux at Worman's Mill
2011	Best Design and Architecture for an Attached Home, Including Townhomes, Two over Twos, Back to Back Townhomes and Duplexes, \$300,000 - \$350,000	Great American Living Awards	The Notting Hill at Monocacy Park
2011	Best Design and Architecture for a Townhome \$400,000 to \$500,000	Frederick County Awards of Excellence	The Notting Hill of Monocacy Park
2011	Best Design and Architecture for a Single Family Home \$700,000 to \$849,999	State of Maryland Awards of Excellence	The Summerhill
2011	Best Townhome Merchandising \$400,000 to \$499,999	State of Maryland Awards of Excellence	The Notting Hill of Monocacy Park
2011	Best Design and Architecture for an Attached Home \$500,000 to \$599,999	State of Maryland Awards of Excellence	The Mayfair of the Wellington Villas
2011	Best Design and Architecture for a Single Family Home \$1.5 to \$2 million	Frederick County Awards of Excellence	The Le Beaux at Worman's Mill
2011	Best Townhome Merchandising \$300,000 to \$399,999	State of Maryland Awards of Excellence	The Camden of Monocacy Park
2011	Best Design and Architecture for a Townhome \$300,000 to \$349,999	State of Maryland Awards of Excellence	The Camden of Monocacy Park
2011	Best Multi-Family Project	Frederick County Awards of Excellence	Monocacy Park
2011	Best Design and Architecture for a Townhome \$400,000 to \$499,999	State of Maryland Awards of Excellence	The Notting Hill of Monocacy Park
2011	Best Interior Merchandising for an Attached Home, Including Townhomes, Two over Twos, Back to Back Townhomes and Duplexes, Under \$300,000	Great American Living Awards	The Camden at Monocacy Park
2011	Best Interior Merchandising for an Attached Home, Including Townhomes, Two over Twos, Back to Back Townhomes and Duplexes, \$300,000 - \$350,000	Great American Living Awards	The Notting Hill at Monocacy Park
2011	Best Design and Architecture for a Single Family Home \$1 Million and Over	State of Maryland Awards of Excellence	The Le Beaux at Worman's Mill
2011	Best Design and Architecture for an Attached Home, Including Townhomes, Two over Twos, Back to Back Townhomes and Duplexes, Under \$300,000	Great American Living Awards	The Camden at Monocacy Park
2013	National Award for Outstanding Senior Living Development	Published Project in the Design for Aging Review by The American Institute of Architects	Worman's Mill Village Center
2013	Best Design and Architecture for an Attached Single Family Home	State of Maryland Awards of Excellence	The Kensington at Worman's Mill
2013	Best Design and Architecture for an Attached Single Family Home	State of Maryland Awards of Excellence	The Foxhall at Worman's Mill
2014	Best Design And Architecture For An Attached Home, Including Townhomes, Two Over Twos, Back To Back Townhomes And Duplexes, \$350,001 - \$400,000	Great American Living Awards	The Grandview at Woodlands Preserve

YEAR	AWARD	SPONSOR	PRODUCT
2015	Best Single Family Detached Home On A Small Lot That Costs More Than \$850,000	Great American Living Awards	Georgetown at Crown model
2015	Home Of The Year (Best Home In Mid-Atlantic Region)	Great American Living Awards	Georgetown at Crown
2016	Best New Townhome Design	FCBIA Awards of Excellence	The Grand Ashcroft
2016	Award of Merit for Interior Merchandising, attached home, \$400,001 - \$500,000	Great American Living Awards	Grand Ashcroft
2016	Design & Architecture, attached home, \$400,001 - \$500,000	Great American Living Awards	Grand Ashcroft
2017	Outstanding Product - Townhome \$500,000 - \$599,999	Maryland Award of Excellence	The Vanderbilt at East Church
2017	Outstanding Design & Architecture - Townhome \$500,000 - \$599,999	Maryland Award of Excellence	The Vanderbilt at East Church
2017	Best New Home Design \$1M-\$1.25M	Frederick County Building Industry Association (FCBIA)	The Pendleton
2017	Outstanding Design & Architecture for multi-family/Condo home \$400,000 - \$499,999	Maryland Awards of Excellence (MAX)	The Montara at Cascades View
2017	Outstanding Product for Large volume single-family home \$950,000 - \$999,999 (Silver Merit)	Maryland Awards of Excellence (MAX)	The Whitehaven at Brentwood Springs
2017	Outstanding Product for large volume single-family home \$1 million - \$1.199 million	Maryland Awards of Excellence (MAX)	The Pendleton at Bennett Preserve
2017	Outstanding Product for large volume single-family home \$850,000 - \$899,999	Maryland Awards of Excellence (MAX)	The River Birch at Worman's Mill
2017	Outstanding Product for large volume single-family home \$700,000 - \$749,999	Maryland Awards of Excellence (MAX)	The Balmoral at Beallair
2018	Best Sales Model - Townhome	FCBIA Awards of Excellence	The Vanderbilt at EastChurch
2018	Best New Home Design - Townhome	FCBIA Awards of Excellence	The Vanderbilt at EastChurch
2018	Best Design & Architecture Attached Home \$400,000-\$500,000	Great American Living Awards	The Gramercy at River Place
2019	Outstanding Design & Architecture	Maryland Building Industry Association (MBIA)	Beallair
2019	Outstanding Design & Architecture	Maryland Building Industry Association (MBIA)	Landsdale
2019	Outstanding Home	Maryland Building Industry Association (MBIA)	The Taylor
2019	Outstanding Design & Architecture	Maryland Building Industry Association (MBIA)	River Place
2019	Outstanding Home	Maryland Building Industry Association (MBIA)	The Callahan at River Place
2020	Best Of The Best	Frederick News Post	
2020	Best New Home Design - Single Family- \$1M	FCBIA Awards of Excellence	The Taylor
2020	Best Sales Model - \$1M	FCBIA Awards of Excellence	The Taylor
2020	Best Sales Model Townhome \$300,00-\$400,000	Frederick County Building Industry Association (FCBIA)	The Callahan at River Place

YEAR	AWARD	SPONSOR	PRODUCT
2021	Best New Townhome in the Nation	2021 Best in American Living Awards (BALA) by the National Association of Home Builders (NAHB)	Quarry Springs
2021	Design and Architecture Attached Home, Including Townhouses, Two-over-Twos, Back-to-Back Townhouses and Duplexes, Fee Simple and Condo Ownership Over \$850,000	Great American Living Awards	The Logan
2021	Grand Award - Home of the Year	Great American Living Awards	The Logan
2021	Outstanding Implementation of Innovative Design Concepts for a Product Line	Great American Living Awards	Modern Farmhouse Collection
2021	Outstanding Living Space or Architectural Feature in a Product or Product Line	Great American Living Awards	Taylor Covid - Responsive Command Center (Home Office)
2021	Design & Architecture, Detached Home (on lots 7,000 sq. ft. and over), \$850,000 - \$1,000,000	Great American Living Awards	The Taylor at Landsdale
2021	Design & Architecture, Detached Home (on lots 7,000 sq. ft. and over), \$700,001 - \$850,000	Great American Living Awards	The Crawford at Beallair

LOVE
WHERE
YOU
LIVE

W
W O R M A L D